



AquaPointe Bottle Filler

Ambient • Filtered



Optional
touch-free,
sensor
activated
dispense

Ambient
and chilled
model
options

Call **01392 877 172** Email **hello@thirstywork.com**
www.thirstywork.com



hydrateconsciously!
We're committed to reducing plastic waste

Wall Mounted Bottle Filler

Our most compact non-refrigerated bottle filler



Manual non-refrigerated model



Touch-free non-refrigerated model

COLOUR OPTIONS



Brushed Stainless Steel

WATER OPTIONS



Ambient

Filtered

Not all options are included as standard, please choose at point of order

INSTALLATION OPTIONS



Wall Mounted



Counter-top

KEY FEATURES

- Ambient water (non-refrigerated model)
- Compact sports bottle filler
- Manual push button activation or optional electronic touch-free activation with shut-off timer and refill counter
- Enhanced alcove to fit large sports bottles
- Basin is designed to eliminate splashing and standing water.
- Surface wall-mounted or counter top
- Heavy duty steel frame
- No electricity required to operate the manual non-refrigerated model
- Built-in drainage - no drip tray to empty
- Simple to replace existing fountains
- With **pura3000** filtration
- Optional **puraguard** Antibacterial and antiviral protection

The AquaPointe bottle filler is our most compact bottle filler, available as a non-refrigerated, or refrigerated model. It is ideal for busy venues, such as public buildings, gyms and sports complexes, hospitals, schools, and offices. The manual non-refrigerated model requires no power to operate.

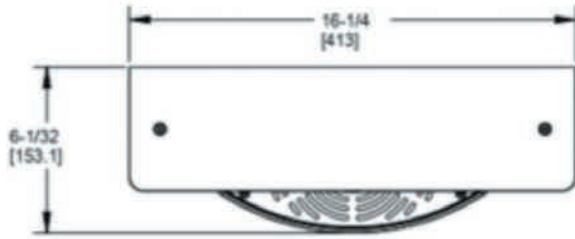
The contactless model has a shut-off timer, and an integrated bottle counter that conveniently tracks and displays the number of refills.

Puraguard is a ground-breaking protective antimicrobial coating that can be applied to your dispensers taps on request).

DIMENSIONS

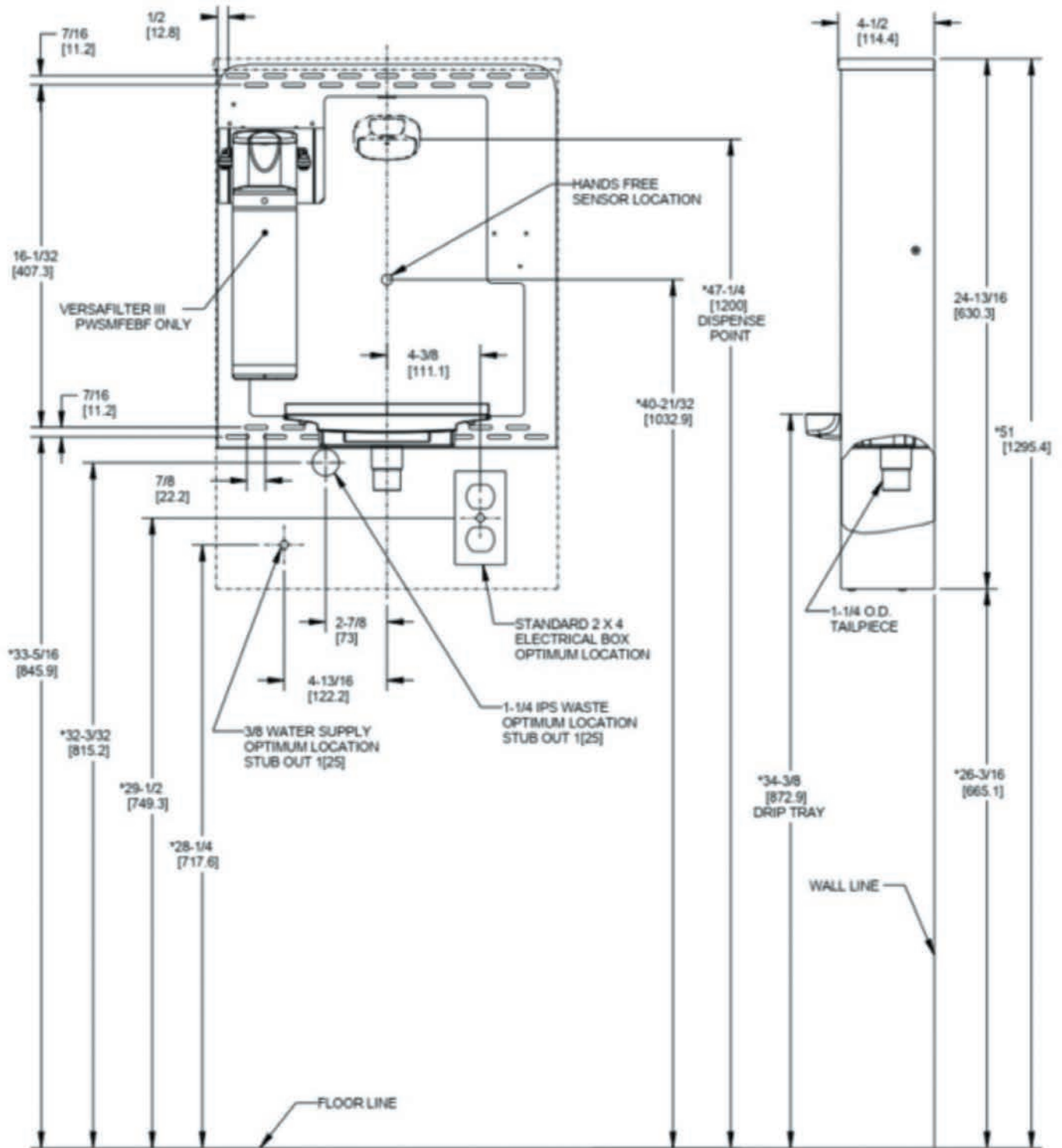
Height (non-refrigerated):	630mm
Width (non-refrigerated)::	413mm
Depth (non-refrigerated)::	144mm
Dispense height:	330mm

TOUCHLESS NON-REFRIGERATED INSTALLATION



NOTES:

- * 1. RECOMMENDED ADULT HEIGHT INSTALLATION SHOWN. ADJUST VERTICAL DIMENSIONS AS REQUIRED TO COMPLY WITH FEDERAL, STATE AND LOCAL CODES.
- 2. 3/8 O.D. WATER INLET WITH STRAINER PROVIDED.
- 3. STOP VALVE, TRAP, PIPE CONNECTOR TO WASTE LINE AND 3/8 COMPRESSION FITTING NOT PROVIDED.
- 4. ALL DIMENSIONS ARE IN INCHES. DIMENSIONS IN BRACKETS [] ARE IN MILLIMETERS.



FULL SPECIFICATION Aquapointe manual, non-refrigerated surface-mounted bottle filler.

Max power consumption	Manual: No power required
Throughput litres per hour	As mains water supply
Dimensions	413mm (W) x 144mm (D) x 630mm (H)
Weight	5kg

FULL SPECIFICATION Aquapointe contactless, non-refrigerated surface-mounted bottle filler.

Max power consumption	Contactless: 7W	Power supply: 220-240V, 50/60 Hz
Throughput litres per hour	As mains water supply	
Dimensions	413mm (W) x 144mm (D) x 630mm (H)	
Weight	5kg	

AVAILABLE ACCESSORIES



Paper Cups

- 7oz recyclable paper cups
- 7oz biodegradable and compostable paper cups
- 4oz paper cones



Puraguard

- Antibacterial and Antiviral Protection Coating



Call **01392 877 172** Email **hello@thirstywork.com**
www.thirstywork.com